

EARLY FORD MOTOR CO.

- WHERE IT WAS MADE -

After moving to Detroit, Henry Ford, over 8 years, built automobiles in his free time. In August 1902, using personal contacts, he was able with a successful Detroit businessman, Alexander Malcomson, to form a limited partnership to build automobiles. Using his experience, new ideas and designs, Henry Ford and close friends, created a prototype Ford vehicle at a small shop on Park Place, Detroit, MI. The Dodge Bros. were

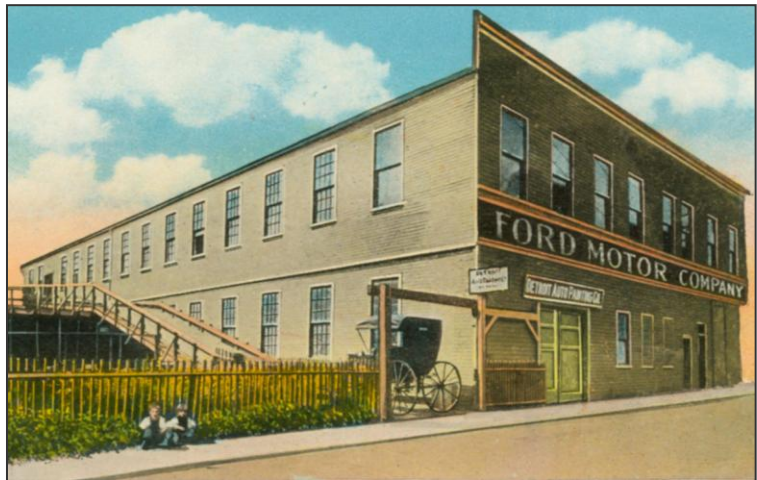


so impressed with the engine design; they decided to become investors in the new Ford company and they set up a plant on Monroe Street with 150 employees to manufacture the running gear engine and drive train for the Ford cars.



The first Ford factory that assembled cars was a one story building located on Mack Avenue that was owned by Malcomson. The Ford Motor Co. was formed on June 16, 1903, and the first automobile was shipped on July 20, 1903. The motors, frames, axles and transmissions were delivered by Dodge to the Ford plant on wagons where teams of two or three men assembled the new automobiles. Bodies were purchased from the Wilson Carriage Co.

As sales grew, the building was expanded to meet the growing needs. A second story was added to Mack Avenue in 1904. During the one and half year period (1903 to 1904), three different Ford Models were made at the plant.



With the demand for the Ford cars high, in April 1904, the Directors of Ford approved the purchase of over 3 acres on Piquette Avenue to build a new factory. By 1905, the number of Ford employees had grown to 130 employees. The New



England mill style factory was 402 feet long, 56 feet wide and 3 stories high. The walls were constructed of common brick and



for light there were 355 windows. In addition to the main building there was a power house that was 36 by 57 feet. Because of a disastrous fire at the Olds Motor Works factory, safety was added with a sprinkler system, fire doors that divided the building into

four sections, rounded support poles, double layer floors and fire escapes. During the five year period (1905 – 1910) year period, the Ford cars made at the Piquette Factory Plant were the Models B, C, F, F, N, R, S, SR and T.

What and Where it was made ...

Year	Location	# Emp.	# Units	Models
1903-1904	Mack Ave	125	1,700	A
1904-1905	Mack Ave	300	1,745	AC,B,C
1 1905-1906	Piquette Ave	300	1,599	B,C,F
1906-1907	Piquette Ave	700	8,423	B,F,K,N,R,S
2 1907-1908	Piquette Ave	575	6,378	K,N,R,S,SR
1908-1909	Piquette Ave	450	10,607	R,S,SR,T
1909-1910	Piquette Ave	1,655	18,664	T

1 - Production Issues; **2** – Economic Recession

With the demand for *The Ford* automobile so high, by August 1906, the directors of the Ford Motor Company realized that a new and larger factory building than Piquette would be needed. So a decision was made to purchase property for the construction of a new Highland Park Plant (1910).

